

# Theoretical Perspectives on Flavor Physics and CP violation

*Zoltan Ligeti*

*APS April 2003 Meeting*

- Introduction to flavor physics
  - ... Why bother? What are we after?
- Status of CKM matrix
  - ... Why are  $\sin 2\beta$  and  $B_{d,s}$  mixing clean?
- Future: what are sensitive tests?
  - ... Some nice and clean measurements
  - ... Bits of theory: SCET
- Conclusions

# Why is flavor physics and CPV interesting?

- Almost all extensions of the SM contain new sources of  $CP$  and flavor violation (e.g., 43 new CPV phases in SUSY [must see superpartners to discover it])
- A major constraint for model building (flavor structure: universality, heavy squarks, squark-quark alignment, ...)
- May help to distinguish between different models (mechanism of SUSY breaking: gauge-, gravity-, anomaly-mediation, ...)
- The observed baryon asymmetry of the Universe requires CPV beyond the SM (not necessarily in flavor changing processes in the quark sector)

There is no “standard” new physics scenario in flavor sector...

# Baryogenesis

$$\frac{\# \text{ baryons}}{\# \text{ photons}} \sim 10^{-9} \text{ now} \iff \frac{n_q - n_{\bar{q}}}{n_q + n_{\bar{q}}} \sim 10^{-9} \text{ at } t < 10^{-6} \text{ sec } (T > 1 \text{ GeV})$$

- To produce such an asymmetry, need (Sakharov conditions)

1. baryon number violating interactions
2.  $C$  and  $CP$  violation
3. deviation from thermal equilibrium

- SM contains 1–3, but

A.  $CP$  violation is too small

B. deviation from thermal equilibrium too small with just one Higgs doublet

NP models can solve A–B near the weak scale, and may have observable effects (possibly only in flavor diagonal processes, such as electric dipole moments)

# Neutrinos and leptogenesis

Two large mixing angles observed — a real surprise!

Leptogenesis appears more and more plausible:

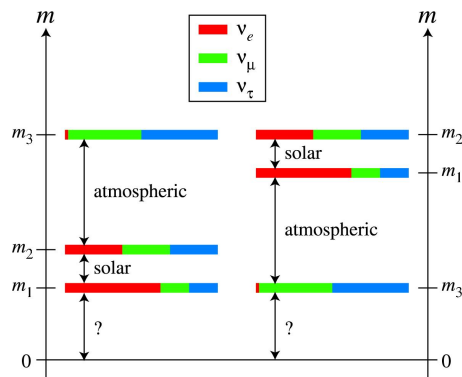
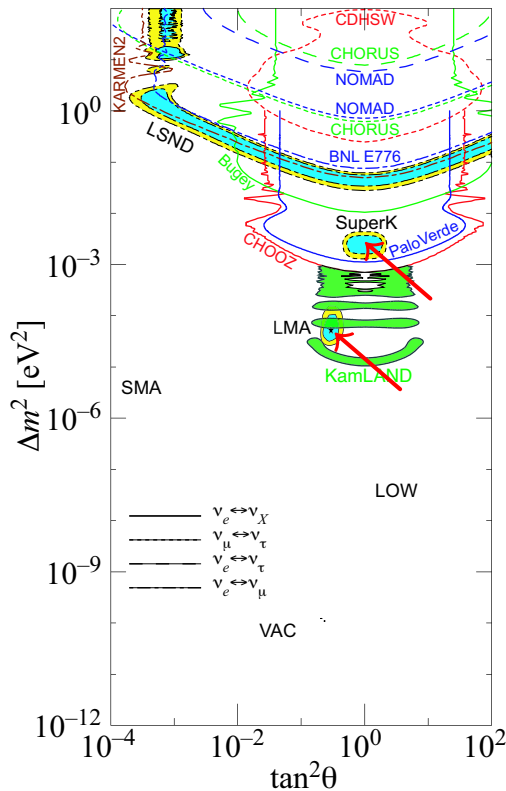
... generate  $B - L$  by CPV decay of  $\nu_{\text{heavy}}$

...  $\nu_{\text{heavy}}$  lives long enough to decay when  $T < m_{\nu_{\text{heavy}}}$

Baryon asymmetry due to  $B + L$  violating but  $B - L$  conserving processes above electroweak phase transition

Model dependent whether relevant CPV parameters are related to CPV in light neutrino sector

Connection to TeV scale is model dependent



# Central questions of flavor physics

1. Does the SM (only virtual quarks,  $W$ , and  $Z$  interacting through CKM matrix in tree and loop diagrams) explain all flavor changing interactions?
2. At what level and where could we see deviations?

Need: experimental precision ( $B$  factories) and theoretical precision (cleanliness)

---

New physics most likely to modify:

- SM loop processes: mixing  
rare decays
- $CP$  violation

So we want to study:

- mixing & rare decays
- $CPV$  asymmetries
- compare tree and loop processes

- The point is not only to measure CKM elements, but to overconstrain the SM by many “redundant” measurements; correlations may be crucial to narrow down NP

# The problem: strong interactions

- Can we learn about high energy physics from low energy hadronic processes?

Solutions: – Symmetries of QCD (exact or approximate)

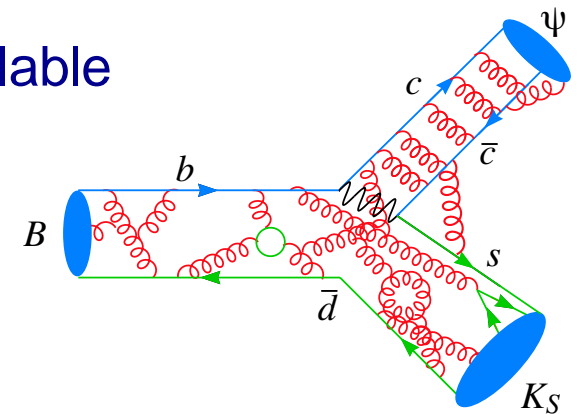
– Certain processes are determined by short-distance physics

Sometimes possible to combine data and symmetries to eliminate hadronic mess

Example:  $\sin(2\beta)$  from  $B \rightarrow \psi K_S$  — amplitude not calculable

Solution:  $CP$  symmetry of QCD ( $\theta_{\text{QCD}}$  can be neglected)

$$\langle \psi K_S | \mathcal{H} | B^0 \rangle = -\langle \psi K_S | \mathcal{H} | \bar{B}^0 \rangle \times [1 + \mathcal{O}(\alpha_s \lambda^2)]$$



- The key processes are those which can teach us about high energy physics without hadronic uncertainties

# **Status of CKM matrix**

# CKM matrix and the unitarity triangle

- Charged current weak interactions — CKM matrix:

$$(u, c, t) \begin{pmatrix} V_{ud} & V_{us} & V_{ub} \\ V_{cd} & V_{cs} & V_{cb} \\ V_{td} & V_{ts} & V_{tb} \end{pmatrix} \begin{pmatrix} d \\ s \\ b \end{pmatrix} \begin{matrix} \sim 1 \\ \sim \lambda \\ \sim \lambda^2 \\ \sim \lambda^3 \end{matrix} \quad \lambda \sim 0.22$$

Depend on 3 angles + 1 phase — only source of CPV in the SM (except for  $\theta_{\text{QCD}}$ )



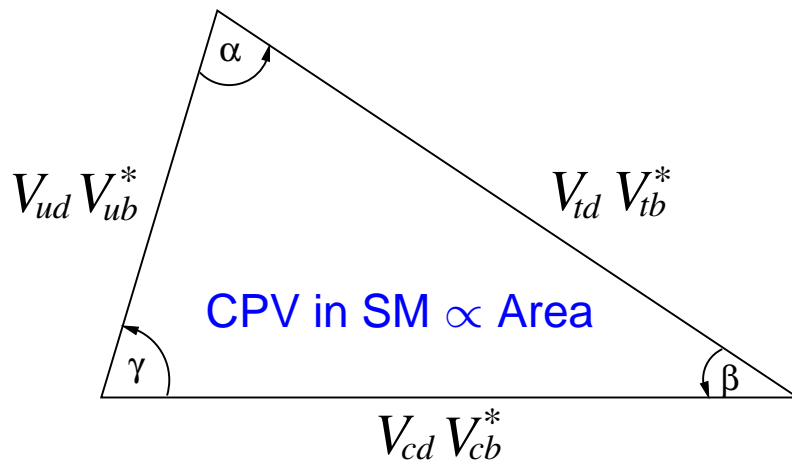
# CKM matrix and the unitarity triangle

- Charged current weak interactions — CKM matrix:

$$(u, c, t) \begin{pmatrix} V_{ud} & V_{us} & V_{ub} \\ V_{cd} & V_{cs} & V_{cb} \\ V_{td} & V_{ts} & V_{tb} \end{pmatrix} \begin{pmatrix} d \\ s \\ b \end{pmatrix} \begin{matrix} \sim 1 \\ \sim \lambda \\ \sim \lambda^2 \\ \sim \lambda^3 \end{matrix} \quad \lambda \sim 0.22$$

Depend on 3 angles + 1 phase — only source of CPV in the SM (except for  $\theta_{\text{QCD}}$ )

- The unitarity triangle provides a simple way to visualize the SM constraints



$$V_{ud} V_{ub}^* + V_{cd} V_{cb}^* + V_{td} V_{tb}^* = 0$$

The angles and sides are directly measurable — want to overconstrain this picture

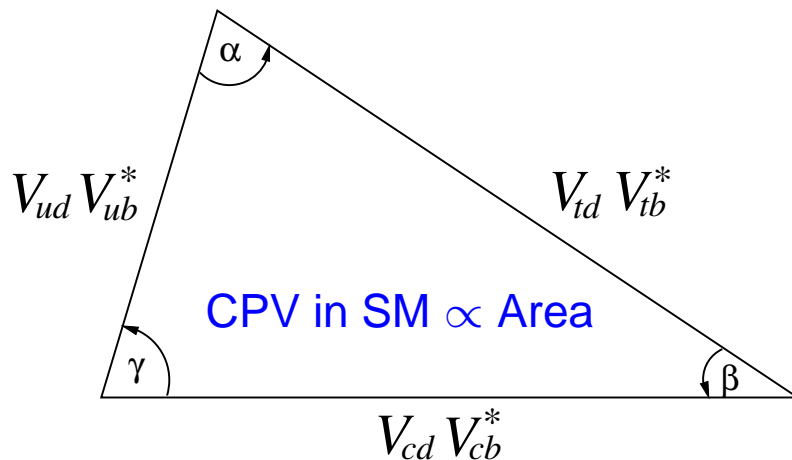
# CKM matrix and the unitarity triangle

- Convenient to exhibit hierarchical structure by expanding in  $\lambda = \sin \theta_C$

$$V = \begin{pmatrix} 1 - \frac{1}{2}\lambda^2 & \lambda & A\lambda^3(\rho - i\eta) \\ -\lambda & 1 - \frac{1}{2}\lambda^2 & A\lambda^2 \\ A\lambda^3(1 - \rho - i\eta) & -A\lambda^2 & 1 \end{pmatrix} + \mathcal{O}(\lambda^4)$$

Present uncertainties:  $\lambda \sim 1\%$ ,  $A \sim 5\%$ ,  $\eta/\rho \sim 7\%$ ,  $\sqrt{\rho^2 + \eta^2} \sim 20\%$ ,

- The unitarity triangle provides a simple way to visualize the SM constraints



$$V_{ud} V_{ub}^* + V_{cd} V_{cb}^* + V_{td} V_{tb}^* = 0$$

The angles and sides are directly measurable — want to overconstrain this picture

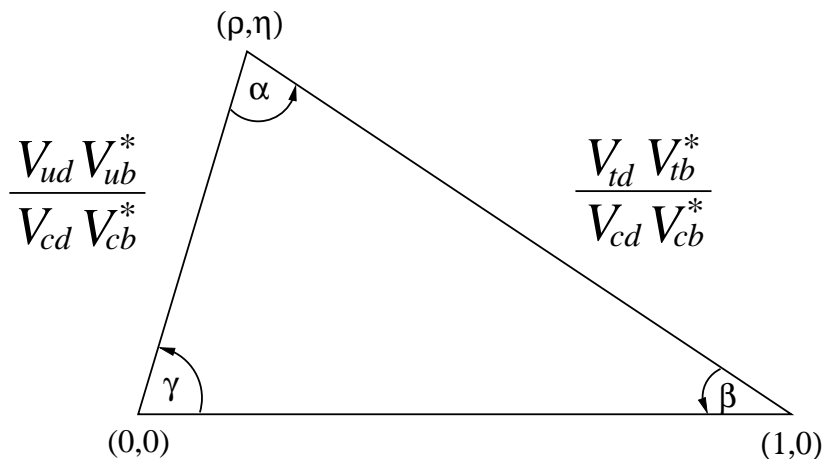
# CKM matrix and the unitarity triangle

- Convenient to exhibit hierarchical structure by expanding in  $\lambda = \sin \theta_C$

$$V = \begin{pmatrix} 1 - \frac{1}{2}\lambda^2 & \lambda & A\lambda^3(\rho - i\eta) \\ -\lambda & 1 - \frac{1}{2}\lambda^2 & A\lambda^2 \\ A\lambda^3(1 - \rho - i\eta) & -A\lambda^2 & 1 \end{pmatrix} + \mathcal{O}(\lambda^4)$$

Present uncertainties:  $\lambda \sim 1\%$ ,  $A \sim 5\%$ ,  $\eta/\rho \sim 7\%$ ,  $\sqrt{\rho^2 + \eta^2} \sim 20\%$ ,

- Constraints on CKM usually plotted on the  $(\bar{\rho}, \bar{\eta})$  plane



Main uncertainties of two sides:

$V_{td}$ :  $B_s$  mixing or lattice  $f_{B_d}^2 B_{B_d}$

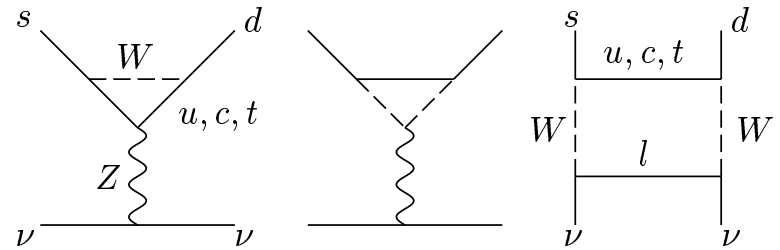
$V_{ub}$ : semileptonic  $b \rightarrow u$  decays

# Why $B$ physics?

- CPV in  $K$  system is at the right level ( $\epsilon_K$  can be described with  $\mathcal{O}(1)$  CKM phase); hadronic uncertainties preclude precision tests ( $\epsilon'_K$  notoriously hard to calculate)

Plan to measure  $K \rightarrow \pi\nu\bar{\nu}$  — theoretically clean, but  $\mathcal{B} \sim 10^{-10}(K^\pm)$ ,  $10^{-11}(K_L)$

$$\mathcal{A} \propto \begin{cases} (\lambda^5 m_t^2) + i(\lambda^5 m_t^2) & t: \text{CKM suppressed} \\ (\lambda m_c^2) + i(\lambda^5 m_c^2) & c: \text{GIM suppressed} \\ (\lambda \Lambda_{\text{QCD}}^2) & u: \text{GIM suppressed} \end{cases}$$



- In  $D$  decays the SM predicts small CPV — both GIM and CKM suppressed

- In the  $B$  meson system, large variety of interesting processes:

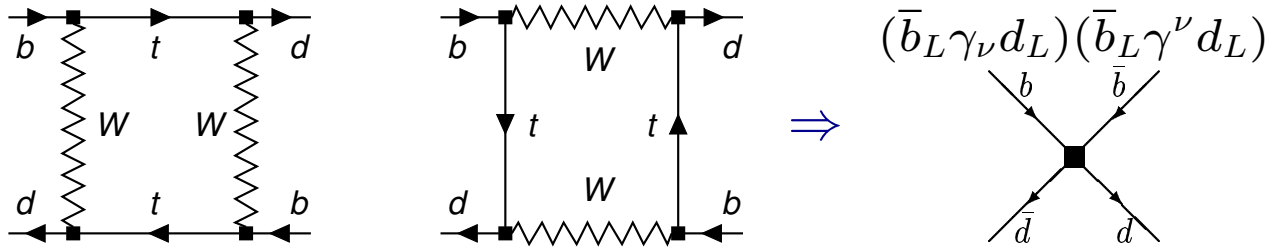
- top quark loops neither GIM nor CKM suppressed (large mixing, rare decays)
- large  $CP$  violating effects possible, some of which have clean interpretation
- some of the hadronic physics understood model independently ( $m_b \gg \Lambda_{\text{QCD}}$ )

**$B_{d,s}$  mixing and  $\sin 2\beta$**

# B<sub>d,s</sub> mixing: |V<sub>td</sub>| and |V<sub>ts</sub>|

Two mass eigenstates:  $|B_{H,L}\rangle = p |\bar{b} d\rangle \mp q |b \bar{d}\rangle$

Mixing dominated by top quarks:



$$\Delta m_q = 2|M_{12}| = |V_{tb}V_{tq}^*|^2 \underbrace{f_{B_q}^2 B_{B_q}}_{\text{Nonperturbative matrix element}} \times [\text{known factors}]$$

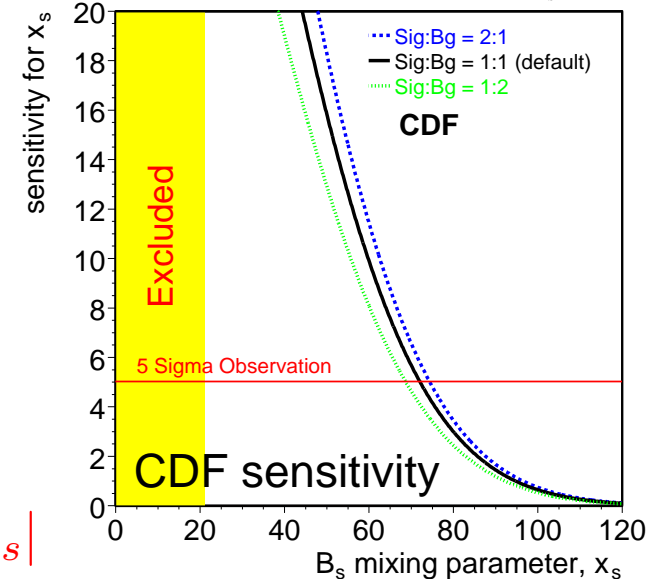
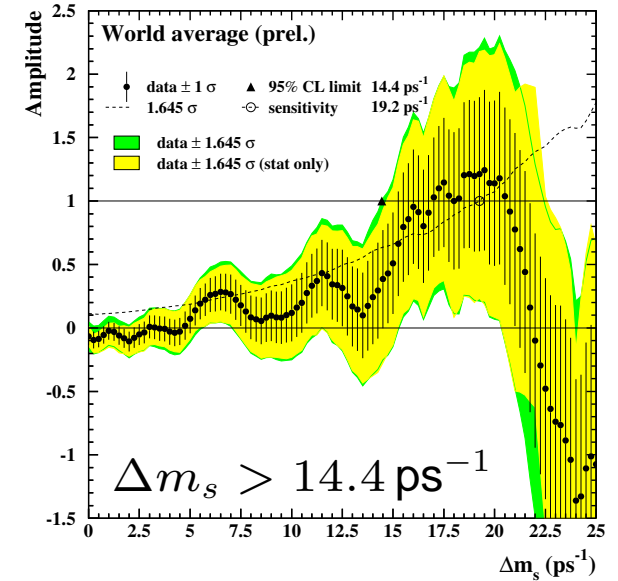
Nonperturbative matrix element

In  $SU(3)$  symmetry limit:  $\xi^2 \equiv f_{B_s}^2 B_{B_s} / f_{B_d}^2 B_{B_d} = 1$

Lattice QCD:  $\xi^2 \sim [1.15(6)]^2$  Chiral logs:  $\sim 1.3$

Need more reliable control of light quark effects

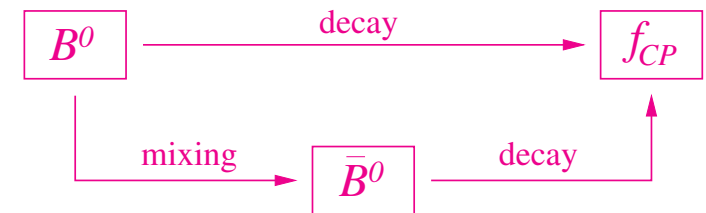
This may soon be the main limitation to extract  $|V_{td}/V_{ts}|$



# CPV in interference between decay and mixing

- Especially interesting if both  $B^0$  and  $\bar{B}^0$  can decay to same final state, e.g.,  $|f\rangle = |f_{CP}\rangle$ :

$$\lambda_{f_{CP}} = \frac{q}{p} \frac{\bar{A}_{f_{CP}}}{A_{f_{CP}}} = \eta_{f_{CP}} \frac{q}{p} \frac{\bar{A}_{\bar{f}_{CP}}}{A_{\bar{f}_{CP}}}$$



$$a_{f_{CP}} = \frac{\Gamma[\bar{B}^0(t) \rightarrow f] - \Gamma[B^0(t) \rightarrow f]}{\Gamma[\bar{B}^0(t) \rightarrow f] + \Gamma[B^0(t) \rightarrow f]} = \frac{2 \operatorname{Im} \lambda_f}{1 + |\lambda_f|^2} \sin(\Delta m t) - \frac{1 - |\lambda_f|^2}{1 + |\lambda_f|^2} \cos(\Delta m t)$$

$CP$  violation:  $|\lambda_f| \neq 1 \Rightarrow CPV$  in mixing and/or decay

$\operatorname{Im} \lambda_f \neq 0 \Rightarrow CPV$  in interference

- If amplitudes with one weak phase dominate a decay then the  $CP$  asymmetry measures a phase in the Lagrangian theoretically cleanly  
(Then  $|\lambda_f| \simeq 1$ , since  $|q/p| - 1 < \mathcal{O}(10^{-2})$  in  $B_{d,s}$  mixing)

$$a_{f_{CP}} = \operatorname{Im} \lambda_f \sin(\Delta m t)$$

# The cleanest case: $B \rightarrow \psi K_{S,L}$

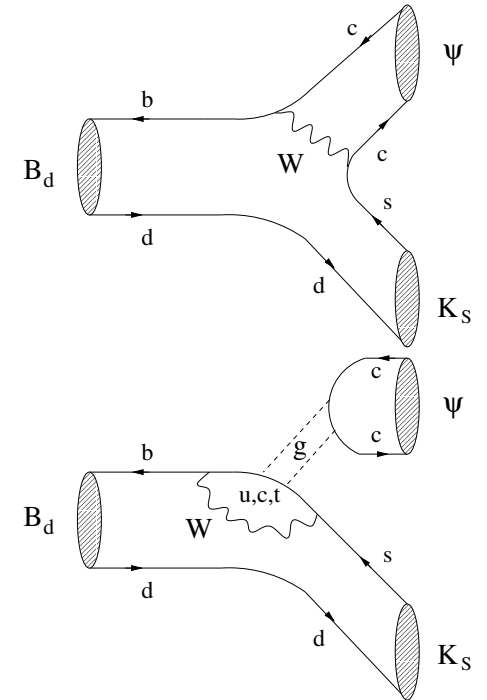
- Several contributions:

“Tree” ( $b \rightarrow c\bar{c}s$ ):  $\bar{A}_T = V_{cb}^{[\lambda^2]} V_{cs}^* A_{c\bar{c}s}$

“Penguin”:  
 $\bar{A}_P = V_{tb}^{[\lambda^2]} V_{ts}^* P_t + V_{cb}^{[\lambda^2]} V_{cs}^* P_c + V_{ub}^{[\lambda^4]} V_{us}^* P_u$

Write sum as:

$$\bar{A}_{\psi K_S} = \underbrace{V_{cb}^{[\lambda^2]} V_{cs}^*}_{\text{“Tree” phase}} [A_{c\bar{c}s} + P_c - P_t] + \underbrace{V_{ub}^{[\lambda^4]} V_{us}^*}_{\text{suppressed by } \lambda^2} [P_u - P_t]$$



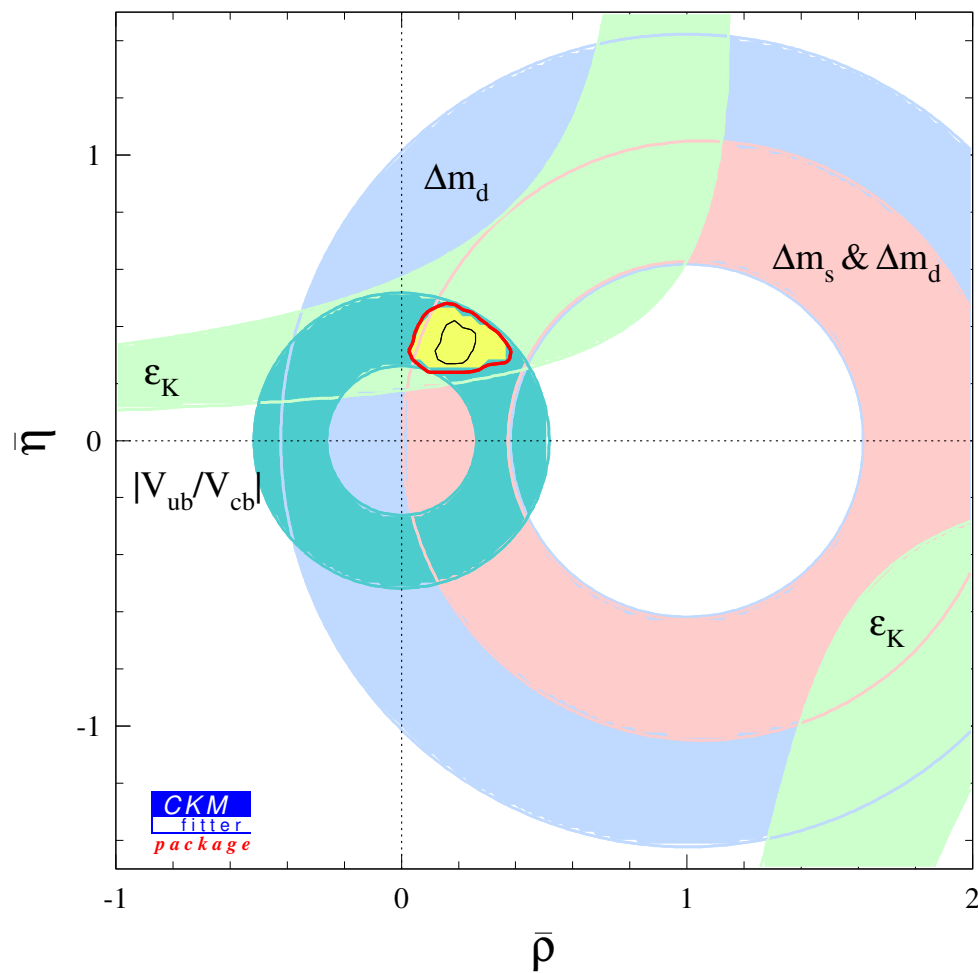
- The  $V_{cb} V_{cs}^*$  term dominates  $\Rightarrow$  theoretically very clean

$$\lambda_{\psi K_{S,L}} = \mp \left( \frac{V_{tb}^* V_{td}}{V_{tb} V_{td}^*} \right) \left( \frac{V_{cb} V_{cs}^*}{V_{cb}^* V_{cs}} \right) \left( \frac{V_{cs} V_{cd}^*}{V_{cs}^* V_{cd}} \right) = \mp e^{-2i\beta} \Rightarrow \text{Im} \lambda_{\psi K_{S,L}} = \pm \sin 2\beta$$



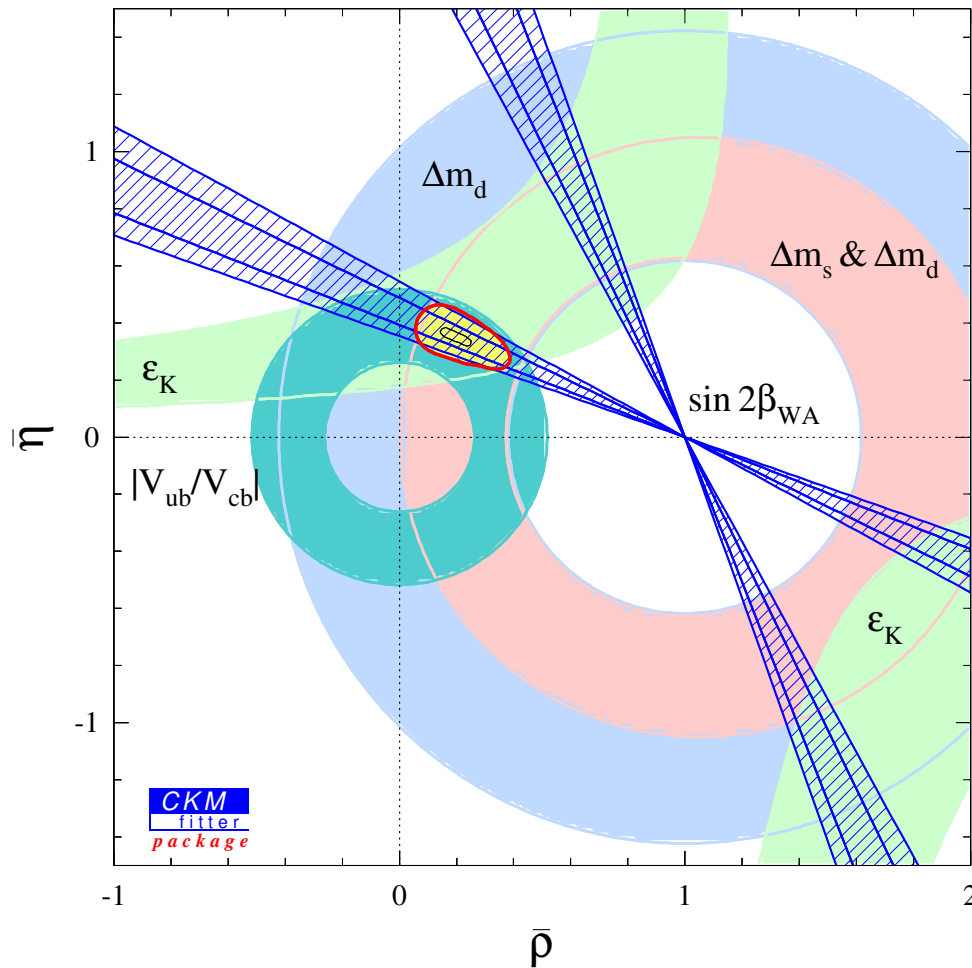
# Present knowledge of $(\bar{\rho}, \bar{\eta})$

Standard model fit without  $\sin 2\beta$



# Present knowledge of $(\bar{\rho}, \bar{\eta})$

Full SM fit including  $\sin 2\beta$



The CKM picture passed its first real test

Paradigm change: look for corrections, rather than alternatives ( $\Delta m_{B_s}$ ,  $S_{\phi K_S}$ ?)

Is the SM the **only** source of CPV?

Does the SM **fully** explain flavor physics?

Key measurements: theoretically clean and experimentally doable

Need others, besides  $\beta$  and  $|V_{td}/V_{ts}|$ :

- 1) Model independent extraction of  $|V_{ub}|$
- 2) Factorization — may help with  $\alpha$ ,  $\gamma$
- 3) “Zero prediction” observables

**Future: what are the good tests?**

# What are we after?

- **In SM:** Only  $V_{ub}$  and  $V_{td}$  have large phases (in usual parameterization)  
any large interference type CPV is a function of these

$\beta$  is “easy” to measure, second can be called:  $\alpha, \gamma, \beta + \gamma, 2\beta + \gamma \dots$   
but this does not make any difference

Independent measurements are cross-checks

---

- **Beyond SM:** Many phases can be large and different ( $B_{d,s}$  mixing, decays)

“ $\alpha, \beta, \gamma$ ” is only a language: measurements that relate to same angle in SM can be sensitive to different NP

Independent measurements (which have clean interpretation) search for NP!

# How to find new physics?

Q: Big deal... Do all possible tests

# How to find new physics?

Q: Big deal... Do all possible tests

A: Some tests are better than others

# How to find new physics?

Q: Big deal... Do all possible tests

A: Some tests are better than others

Q: It's trivial... Check  $\alpha + \beta + \gamma = \pi$

# How not to find new physics?

Q: Big deal... Do all possible tests

A: Some tests are better than others

Q: It's trivial... Check  $\alpha + \beta + \gamma = \pi$

A: This is the wrong test

- i) In most NP models  $\alpha + \beta + \gamma = \pi$
- ii) Even if  $\alpha + \beta + \gamma \neq \pi$ , probably an easier test will show NP first
- iii) Takes very long time and hard to do



# How can new physics show up?

1. Two measurements which relate to the same quantity in the SM incompatible, e.g.,  $S_{\psi K_S} \neq S_{\phi K_S}$
2.  $B_s$  or  $D$  mixing incompatible with SM, e.g.,  $\Delta m_{B_s} \gtrsim 30 \text{ ps}^{-1}$
3. Angles inconsistent with sides
4. Zero prediction observable found large, e.g.,  $a_{CP}(B_s \rightarrow \psi\phi)$ ,  $a_{CP}(B \rightarrow s\gamma)$
5. Enhancement of rare decays of  $B, B_s, K, D$

All are easier than checking  $\alpha + \beta + \gamma = \pi$  and more sensitive to NP

**Some nice and clean measurements**

# $B \rightarrow \phi K_S$ — window to new physics?

- Amplitudes with one weak phase expected to dominate:

$$\bar{A} = \underbrace{V_{cb}V_{cs}^*}_{[\lambda^2]} [P_c - P_t + T_{c\bar{c}s}] + \underbrace{V_{ub}V_{us}^*}_{[\lambda^4]} [P_u - P_t + T_{u\bar{u}s}]$$

dominant contribution
suppressed by  $\lambda^2$

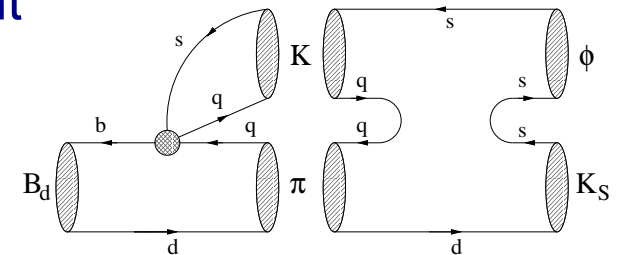
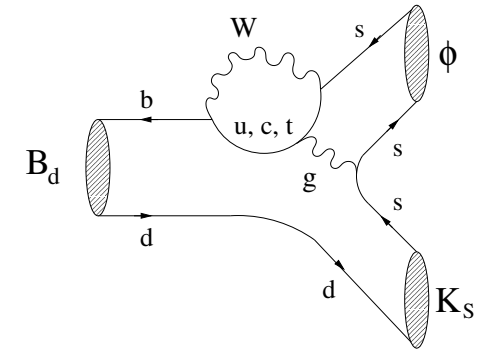
Expect  $\sin 2\beta_{\phi K} \simeq \sin 2\beta_{\psi K}$  in SM at  $\mathcal{O}(\lambda^2) \sim 5\%$  level

Bound  $V_{ub}V_{us}^*$  term using only SU(3) & data  $\Rightarrow$  at present

“ $\Delta(\sin 2\beta)$ ”  $< 0.3$  (Grossman, ZL, Nir, Quinn, hep-ph/0303171)

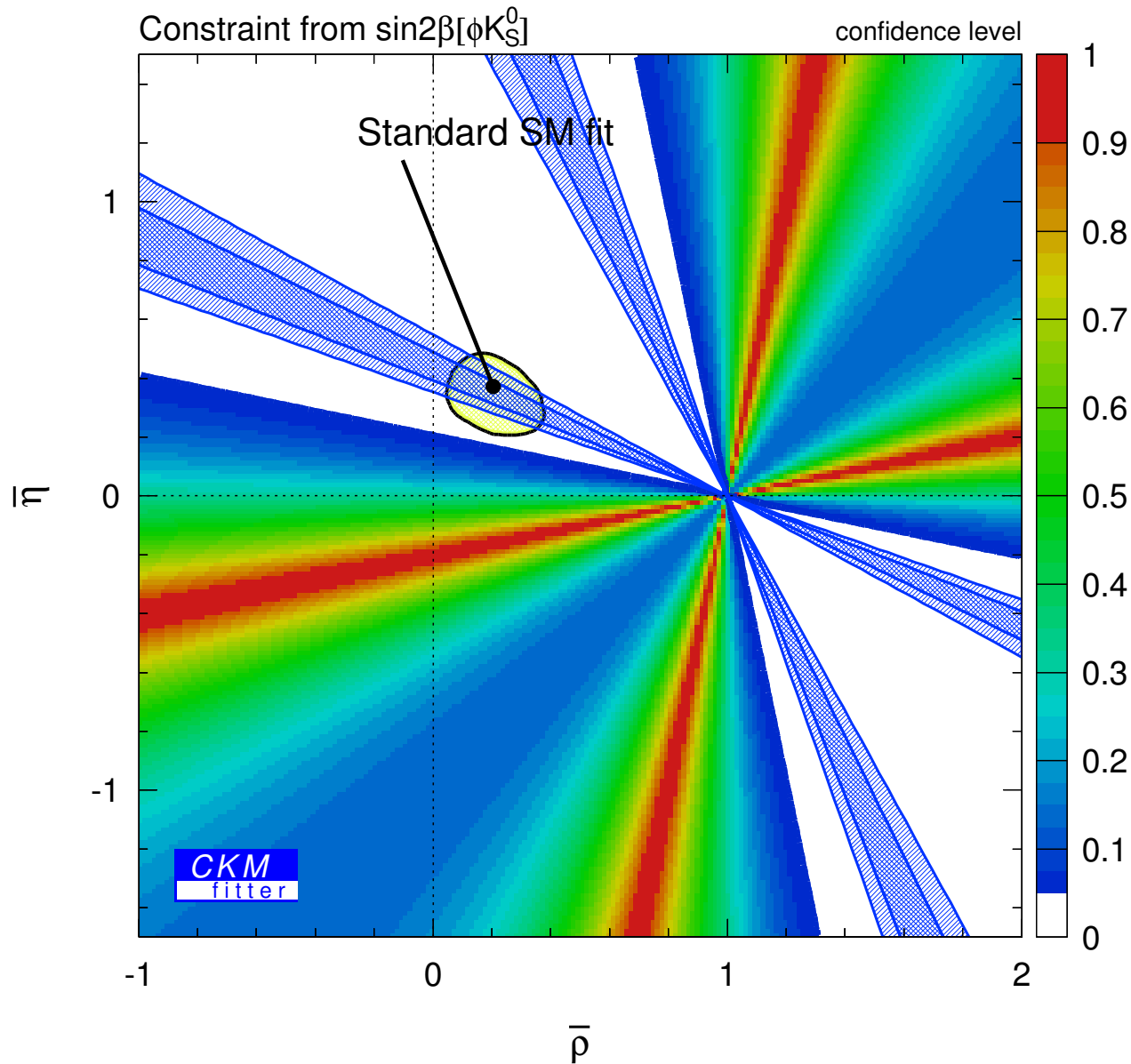
$\psi K_S$ : NP could enter through only  $q/p$

$\phi K_S$ : NP could enter through both  $q/p$  and  $\bar{A}/A$



- Measuring same angle in decays sensitive to different short distance physics may be the key to finding deviations from the SM!

# $B \rightarrow \phi K_S$ — present status



BABAR and BELLE:

$$S_{\psi K} = 0.734 \pm 0.054$$

$$C_{\psi K} = 0.026 \pm 0.020$$

$$S_{\phi K} = -0.39 \pm 0.41$$

$$C_{\phi K} = 0.56 \pm 0.43$$

$S$  terms differ by:  $2.7\sigma$

Need more data to tell...

(Smaller difference in  $\eta' K_S$  and  $K^+ K^- K_S$  modes)

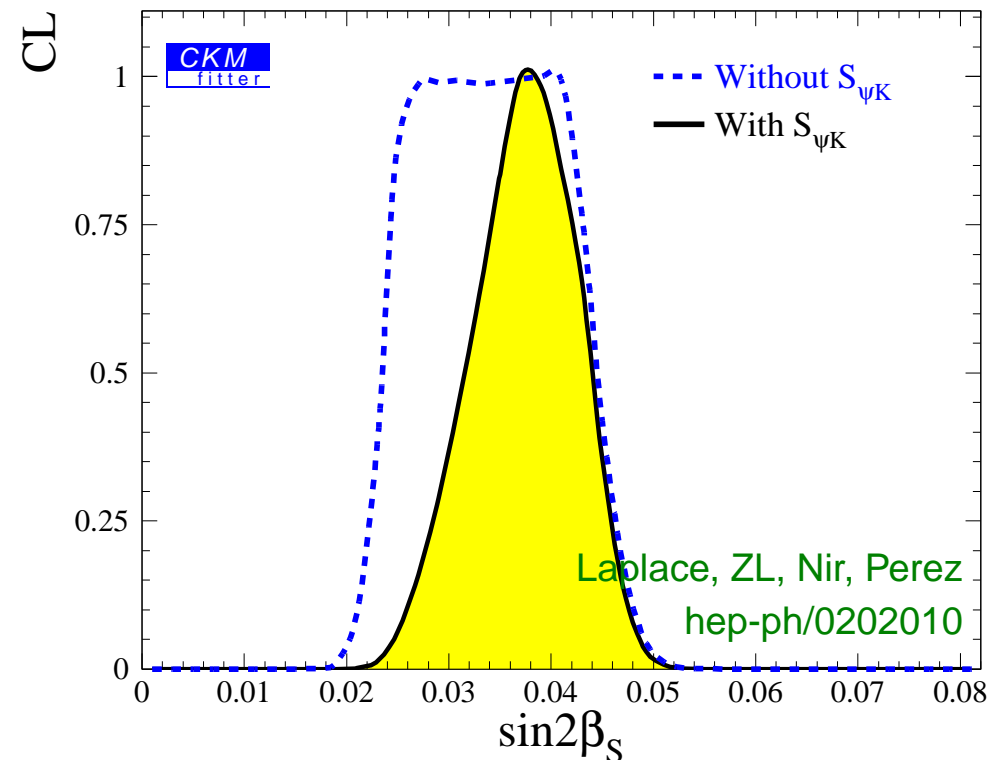
# $B_s \rightarrow \psi\phi$ and $B_s \rightarrow \psi\eta^{(\prime)}$

- Analog of  $B \rightarrow \psi K_S$  in  $B_s$  decay — determines the phase between  $B_s$  mixing and  $b \rightarrow c\bar{c}s$  decay,  $\beta_s$ , as cleanly as  $\sin 2\beta$  from  $\psi K_S$

$\beta_s$  is a small  $\mathcal{O}(\lambda^2)$  angle in one of the “squashed” unitarity triangles

$\psi\phi$  is a VV state, so the asymmetry is diluted by the  $CP$ -odd component

$\psi\eta^{(\prime)}$ , however, is pure  $CP$ -even



- Large asymmetry ( $\sin 2\beta_s > 0.05$ ) would be clear sign of new physics

# $B_s \rightarrow D_s^\pm K^\mp$ — when $|f\rangle \neq |f_{CP}\rangle$

- Interference of  $B_s$  and  $\bar{B}_s$  decay; clean because single weak phase in each decay

Four amplitudes:  $\bar{B}_s \xrightarrow{A_1} D_s^+ K^-$  ( $b \rightarrow c\bar{u}s$ ),  $\bar{B}_s \xrightarrow{A_2} K^+ D_s^-$  ( $b \rightarrow u\bar{c}s$ )  
 $B_s \xrightarrow{A_1} D_s^- K^+$  ( $\bar{b} \rightarrow \bar{c}u\bar{s}$ ),  $B_s \xrightarrow{A_2} K^- D_s^+$  ( $\bar{b} \rightarrow \bar{u}c\bar{s}$ )

$$\frac{\bar{A}_{D_s^+ K^-}}{A_{D_s^+ K^-}} = \frac{A_1}{A_2} \left( \frac{V_{cb} V_{us}^*}{V_{ub}^* V_{cs}} \right), \quad \frac{\bar{A}_{D_s^- K^+}}{A_{D_s^- K^+}} = \frac{A_2}{A_1} \left( \frac{V_{ub} V_{cs}^*}{V_{cb}^* V_{us}} \right)$$

Magnitudes and relative strong phase of  $A_1$  and  $A_2$  drop out if four time dependent rates are measured  $\Rightarrow$  no hadronic uncertainty:

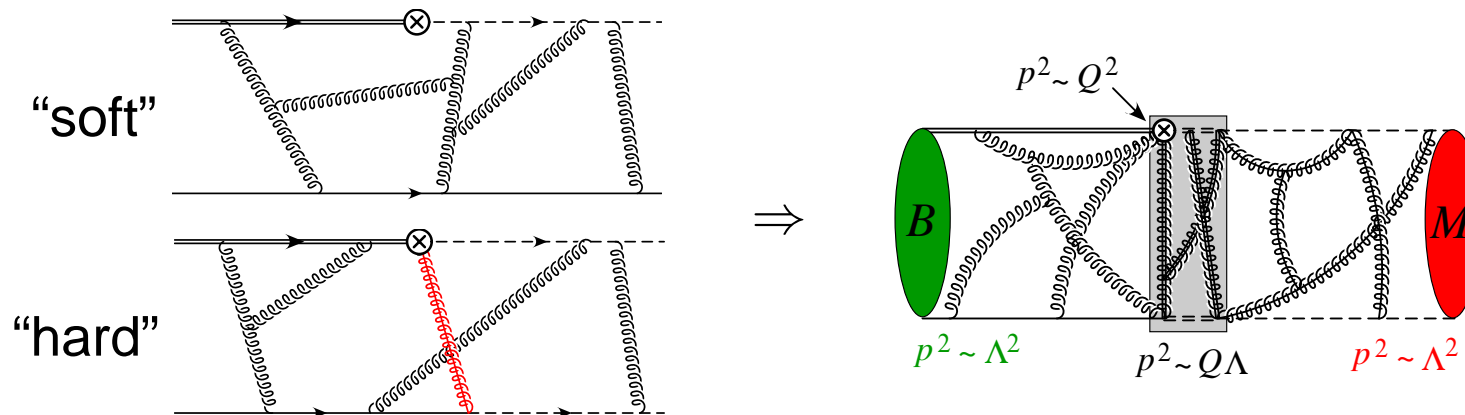
$$\lambda_{D_s^+ K^-} \lambda_{D_s^- K^+} = \left( \frac{V_{tb}^* V_{ts}}{V_{tb} V_{ts}^*} \right)^2 \left( \frac{V_{cb} V_{us}^*}{V_{ub}^* V_{cs}} \right) \left( \frac{V_{ub} V_{cs}^*}{V_{cb}^* V_{us}} \right) = e^{-2i(\gamma - 2\beta_s - \beta_K)}$$

- Similarly,  $B_d \rightarrow D^{(*)\pm} \pi^\mp$  determines  $\gamma + 2\beta$ :  $\lambda_{D^+ \pi^-} \lambda_{D^- \pi^+} = e^{-2i(\gamma + 2\beta)}$

... ratio of amplitudes is  $\mathcal{O}(\lambda^2)$   $\Rightarrow$  expected asymmetries are small

# Theory progress: Soft-Collinear Effective Theory

- A new EFT to describe the interactions of energetic but low invariant mass particles with soft quanta [“the” connection between heavy quarks and jet physics?]
    - ... Operator formulation instead of studying regions of Feynman diagrams
    - ... Simplified and new proofs ( $B \rightarrow D\pi$ ) of factorization theorems
- (Bauer, Pirjol, Stewart, ...)
- E.g.,  $B \rightarrow \pi \ell \bar{\nu}$  form factor: Issues: tails of wave fn's, Sudakov suppression, etc.



Recently proven:  $F(Q) = f^{\text{fact.}}(Q) + f^{\text{non-fact.}}(Q)$  — two terms arise in SCET from matrix elements of distinct operators between the same states

# Many important omissions

Model independent determination of  $|V_{ub}|$  — “hardest” side of UT  
(First results from BABAR and BELLE using methods that may lead to small error)

Rare decays — many observables, sensitive to different NP  
(Learned that deviations from SM in  $b \rightarrow sl^+l^-$  is also  $\lesssim 30\%$ )

$\gamma$  from  $B^\pm \rightarrow K^\pm (D^0, \bar{D}^0) \rightarrow K^\pm f_i$ , or from  $B \rightarrow D^{(*)\pm} \pi^\mp$

$\alpha$  from  $B \rightarrow \pi\pi$  isospin analysis, or from  $B \rightarrow \rho\pi$  Dalitz plot analysis

⋮

etc.

Very broad program — independent measurements are searching for NP!



# A (near future) best buy list

Many important results expected in the coming years:

(apologies for omissions!)

- $|V_{td}/V_{ts}|$ : Tevatron is expected to measure  $B_s$  mixing (2004–2005?)
- $\beta$ : reduce error in  $\phi K_S$ ,  $\eta' K_S$ , and  $KKK$  modes
- $\beta_s$ : is CPV in  $B_s \rightarrow \psi\phi$  small?
- $|V_{ub}|$ : reaching  $< 10\%$  will be significant (need to better understand  $|V_{cb}|$ , too; could be BABAR/BELLE measurements unmatched by LHCb/BTeV)
- Rare decays:  $B \rightarrow X_s \gamma$  near theory limited;  $q^2$  distribution in  $B \rightarrow X_s \ell^+ \ell^-$  will be very interesting
- $\gamma$ : Need to try all clean modes:  $B \rightarrow D^{(*)\pm} \pi^\mp$ ,  $B^\pm \rightarrow DK^\pm$  variants, etc.
- $\alpha$ : How small is  $\mathcal{B}(\pi^0 \pi^0)$ ; how big are other resonances in  $\pi^+ \pi^- \pi^0$  Dalitz plot?
- Search for null observables,  $a_{CP}(b \rightarrow s \gamma)$ , enhanced  $B \rightarrow \ell^+ \ell^-$ ,  $B \rightarrow \ell \nu$ , etc.

Many measurements will not become theory limited by  $\sim 2010$ !

# Conclusions

# Conclusions

- The CKM picture is predictive and testable — it passed its first real test, and is probably the dominant source of CPV in flavor changing processes

# Conclusions

- The CKM picture is predictive and testable — it passed its first real test, and is probably the dominant source of CPV in flavor changing processes
- The point is not only to measure the sides and angles of the unitarity triangle,  $(\rho, \eta)$  and  $(\alpha, \beta, \gamma)$ , but to probe CKM by overconstraining it in as many ways as possible (rare decays, correlations are important)

# Conclusions

- The CKM picture is predictive and testable — it passed its first real test, and is probably the dominant source of CPV in flavor changing processes
- The point is not only to measure the sides and angles of the unitarity triangle,  $(\rho, \eta)$  and  $(\alpha, \beta, \gamma)$ , but to probe CKM by overconstraining it in as many ways as possible (rare decays, correlations are important)
- The program as a whole is a lot more interesting than any single measurement; all possible clean measurements are important, both CPV and CPC

# Conclusions

- The CKM picture is predictive and testable — it passed its first real test, and is probably the dominant source of CPV in flavor changing processes
- The point is not only to measure the sides and angles of the unitarity triangle,  $(\rho, \eta)$  and  $(\alpha, \beta, \gamma)$ , but to probe CKM by overconstraining it in as many ways as possible (rare decays, correlations are important)
- The program as a whole is a lot more interesting than any single measurement; all possible clean measurements are important, both CPV and CPC
- Many processes give clean information on short distance physics, and there is progress towards model independently understanding more observables

# Conclusions

- The CKM picture is predictive and testable — it passed its first real test, and is probably the dominant source of CPV in flavor changing processes
- The point is not only to measure the sides and angles of the unitarity triangle,  $(\rho, \eta)$  and  $(\alpha, \beta, \gamma)$ , but to probe CKM by overconstraining it in as many ways as possible (rare decays, correlations are important)
- The program as a whole is a lot more interesting than any single measurement; all possible clean measurements are important, both CPV and CPC
- Many processes give clean information on short distance physics, and there is progress towards model independently understanding more observables

At last, the field is now experiment driven!

**Extra slides**



# B → ππ — the problem

- There are tree and penguin amplitudes, just like for  $\psi K_S$

“Tree” ( $b \rightarrow u\bar{u}d$ ):  $\bar{A}_T = V_{ub}^{[\lambda^3]} V_{ud}^* A_{u\bar{u}d}$

“Penguin”:  
 $\bar{A}_P = V_{tb}^{[\lambda^3]} V_{td}^* P_t + V_{cb}^{[\lambda^3]} V_{cd}^* P_c + V_{ub}^{[\lambda^3]} V_{ud}^* P_u$

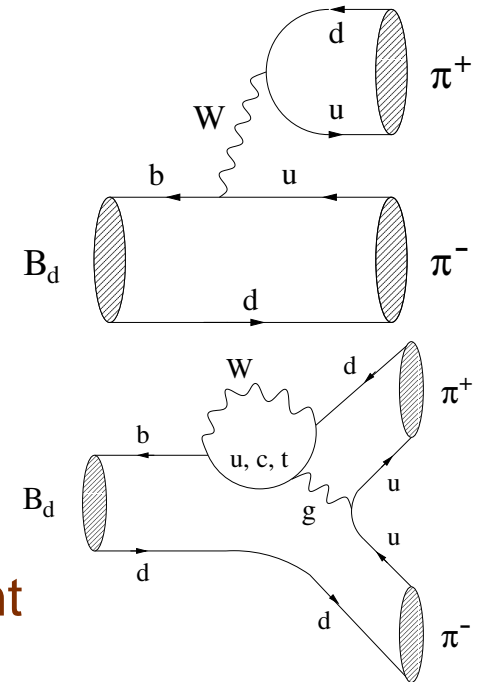
unitarity:  $\bar{A}_{\pi^+\pi^-} = \underbrace{V_{ub}^{[\lambda^3]} V_{ud}^*}_{\text{same as Tree phase}} [A_{u\bar{u}d} + P_u - P_t] + \underbrace{V_{cb}^{[\lambda^3]} V_{cd}^*}_{\text{not suppressed}} [P_c - P_t]$

Two amplitudes with different weak- and possibly different strong phases; their values not known model independently

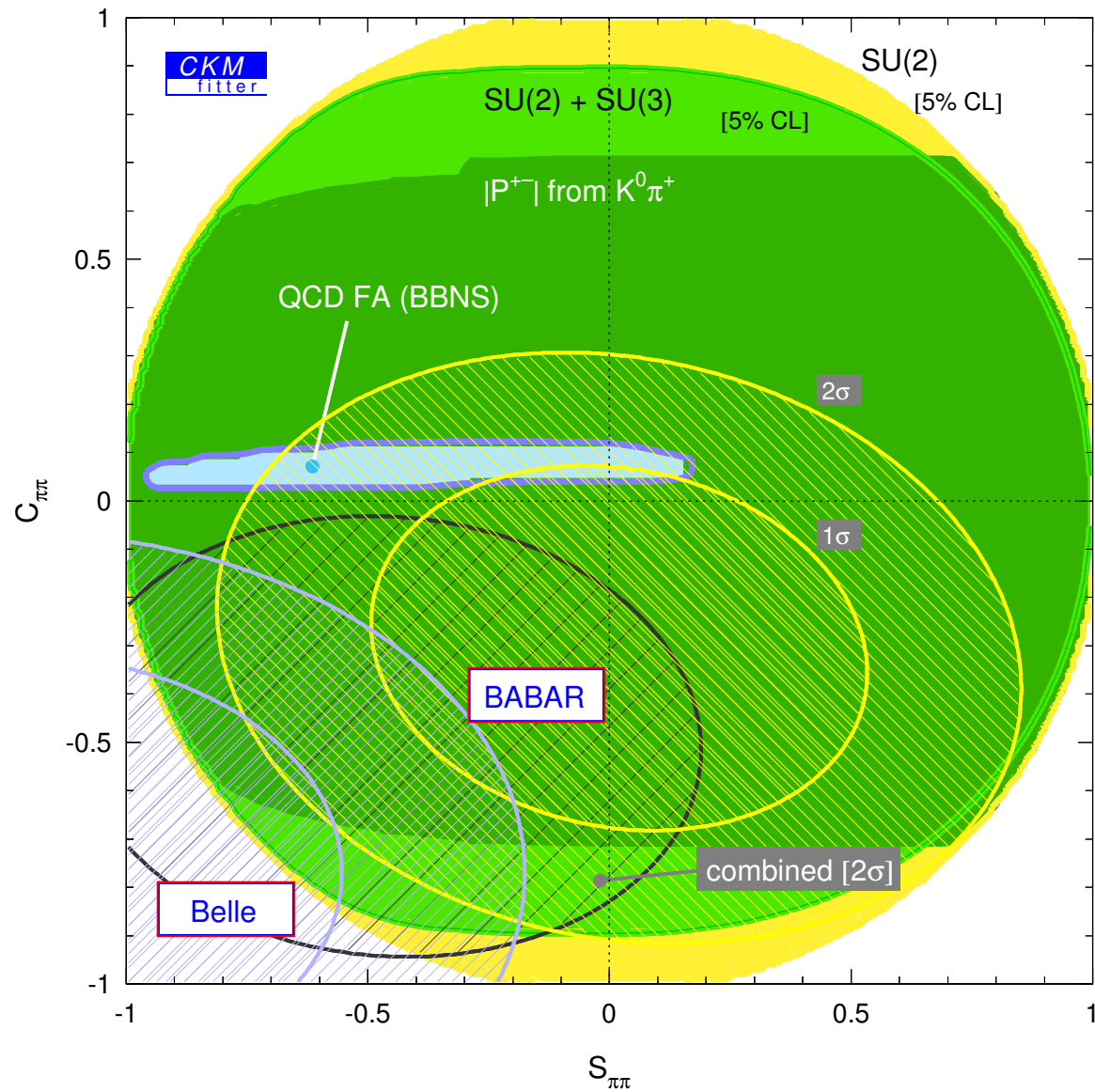
Define  $P$  and  $T$  by:  $\bar{A}_{\pi^+\pi^-} = T(V_{ub}V_{ud}^*) + P(V_{cb}V_{cd}^*)$

Ratio of  $K\pi$  and  $\pi\pi$  rates:  $|P/T| \sim 0.2 - 0.4$ , i.e.,  $|P/T| \not\ll 1$

- Possible solutions: (1) eliminate  $P$ ; or (2) attempt to calculate  $P$



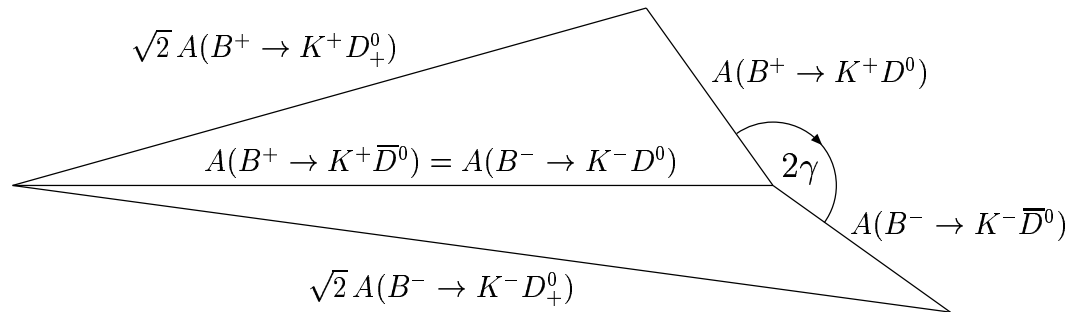
# $B \rightarrow \pi\pi$ — present status



$$B^\pm \rightarrow (D^0, \bar{D}^0) K^\pm \rightarrow f_i K^\pm$$

●  $B^\pm \rightarrow K^\pm D$ : theoretically clean, experimentally very hard

(Gronau-Wyler)



$$\frac{|A(B^+ \rightarrow K^+ D^0)|}{|A(B^+ \rightarrow K^+ \bar{D}^0)|} \sim \frac{|V_{ub}|}{\lambda |V_{cb}|} \frac{1}{N_c}$$

●  $B^\pm \rightarrow K^\pm (D^0, \bar{D}^0) \rightarrow K^\pm f_i$  ( $i = 1, 2$ , at least)

(Atwood, Dunietz, Soni)

Use (and determine) final state interaction in  $D$  decay in the analysis

Idea:  $B^+ \rightarrow K^+ \bar{D}^0 \rightarrow K^+ f_i$  in doubly Cabibbo-suppressed  $\bar{D}^0$  decay

$B^+ \rightarrow K^+ D^0 \rightarrow K^+ f_i$  in Cabibbo-allowed  $D^0$  decay (e.g.,  $f_i = K^- \pi^+ / \rho^+$ )

● It may be better to consider singly Cabibbo-suppressed  $D$  decays,  $D \rightarrow K^\pm K^{*\mp}$

Less sensitive to  $D - \bar{D}$  mixing

(Grossman, ZL, Soffer, hep-ph/0210433)